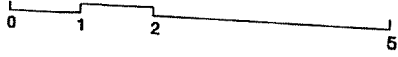
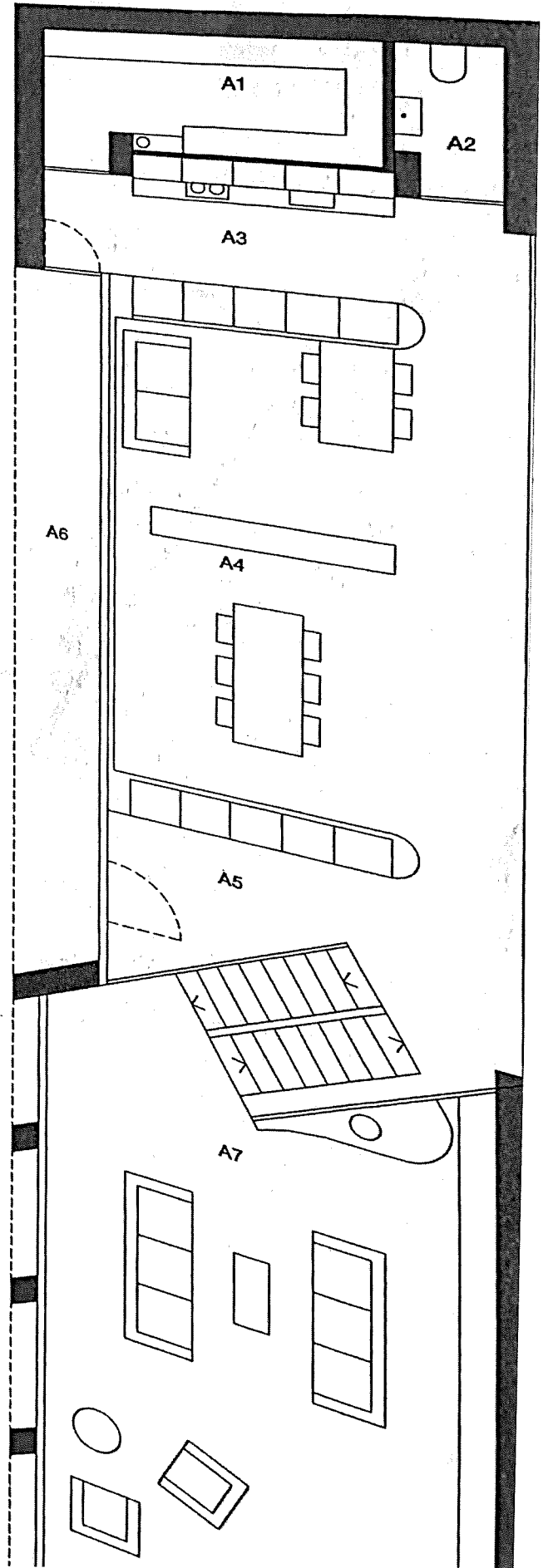


# VIA ALLE PALME 11

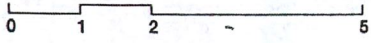


A1. dispensa	6.8 mq
A2. bagno	2.0 mq
A3. cucina	8.8 mq
A4. pranzo	42.5 mq
A5. ingresso	4.8 mq
A6. portico	11.3 mq
A7. soggiorno	38.0 mq

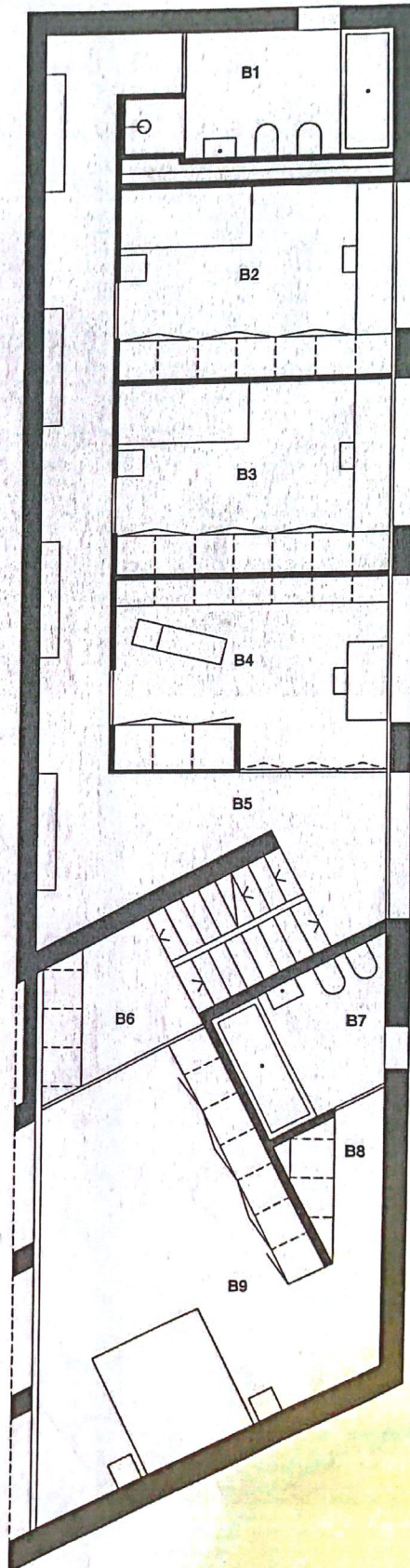


# VIA ALLE PALME 11

MURALTO



B1.bagno	7 mq
B2.camera 1	12 mq
B3.camera 2	12 mq
B4.studio	12 mq
B5.corridoio	23.5 mq
B6.disimpegno	4.2 mq
B7.bagno padronale	4.9 mq
B8.guardaroba	2.7 mq
B9.camera matrimoniale	25.7 mq

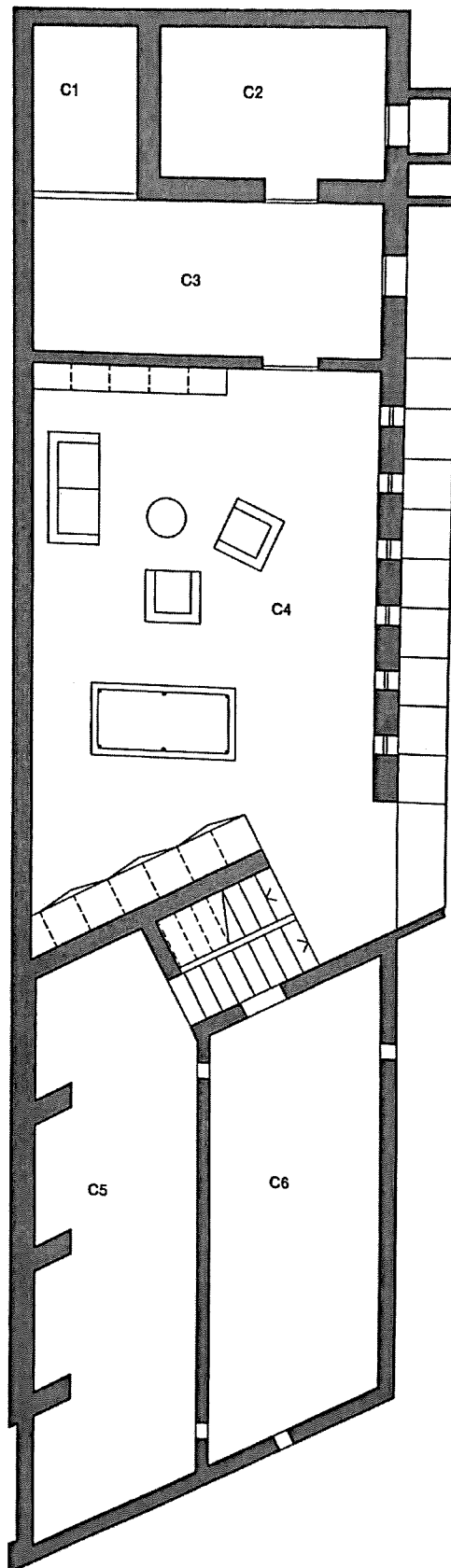


# VIA ALLE PALME 11

MURALTO

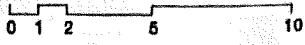


C1.deposito	4 mq
C2.lavanderia	7.5 mq
C3.rifugio	12 mq
C4.locale hobby	45.5 mq
C5.vespaio	20.7 mq
C6.tank	17.7



# VIA ALLE PALME 11

MURALTO



A8.piazza di giro privata

A9. posti auto coperti.

A10.dep.giardino 5.7 mq

A11.dispensa 8.7 mq

