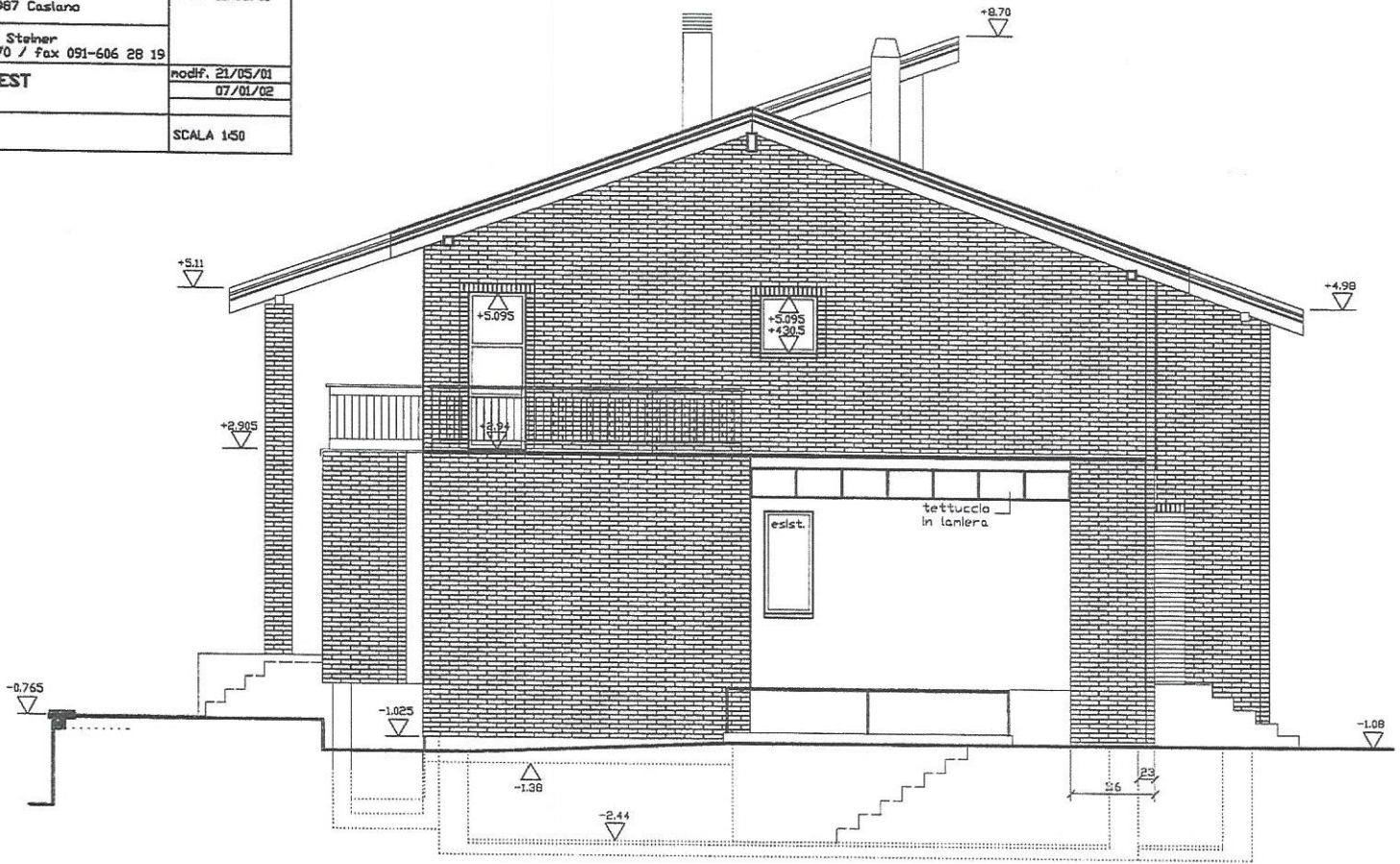


MILIARE di Casiano	0011.17 BS
Guerra e Pirra - 6987 Casiano	DATA: 11/05/01
IA Charly Steiner -606 53 70 / fax 091-606 28 19	modif. 21/05/01 07/01/02
© SUD-EST	SCALA 1:50

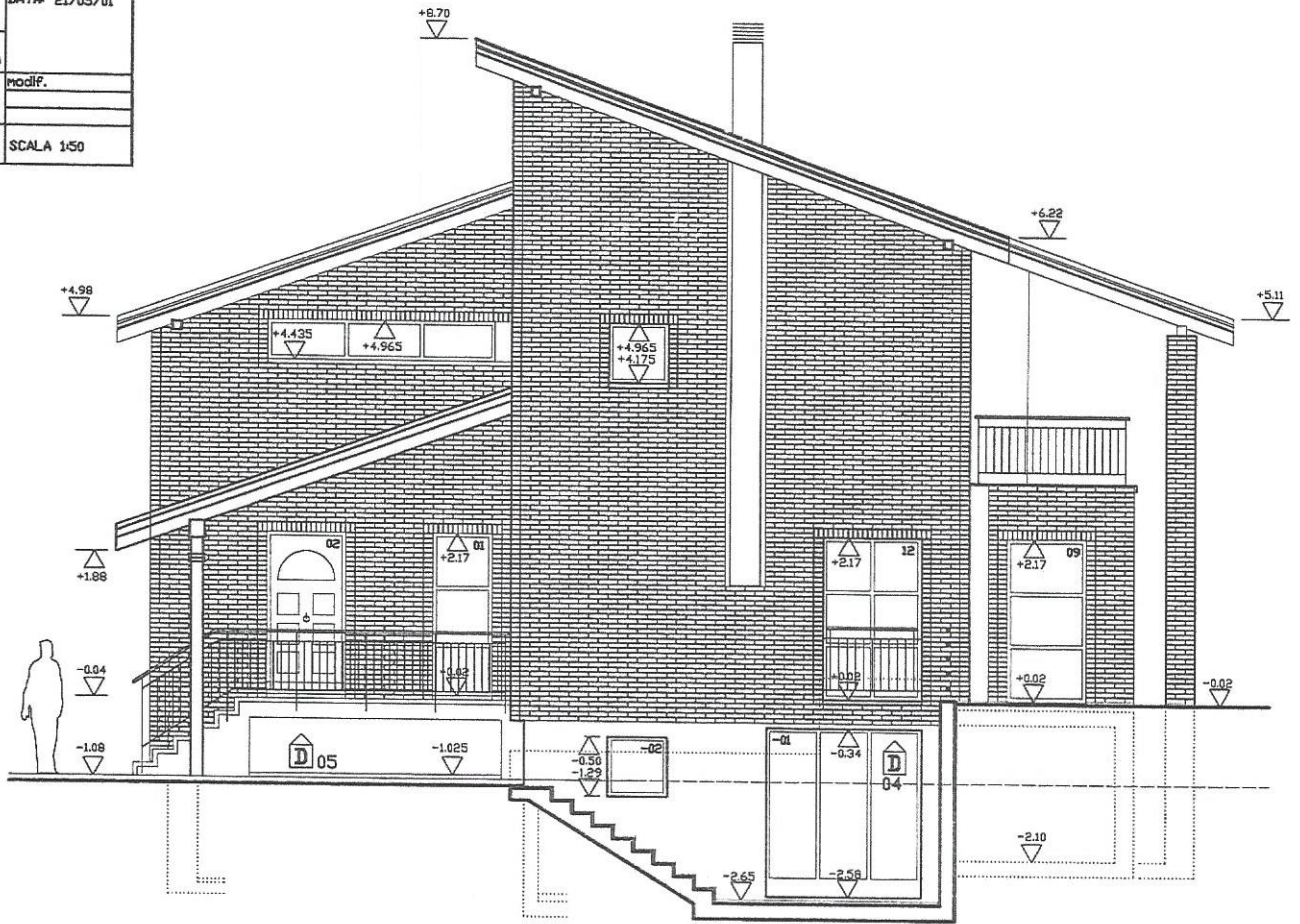


VISTA NORD-EST

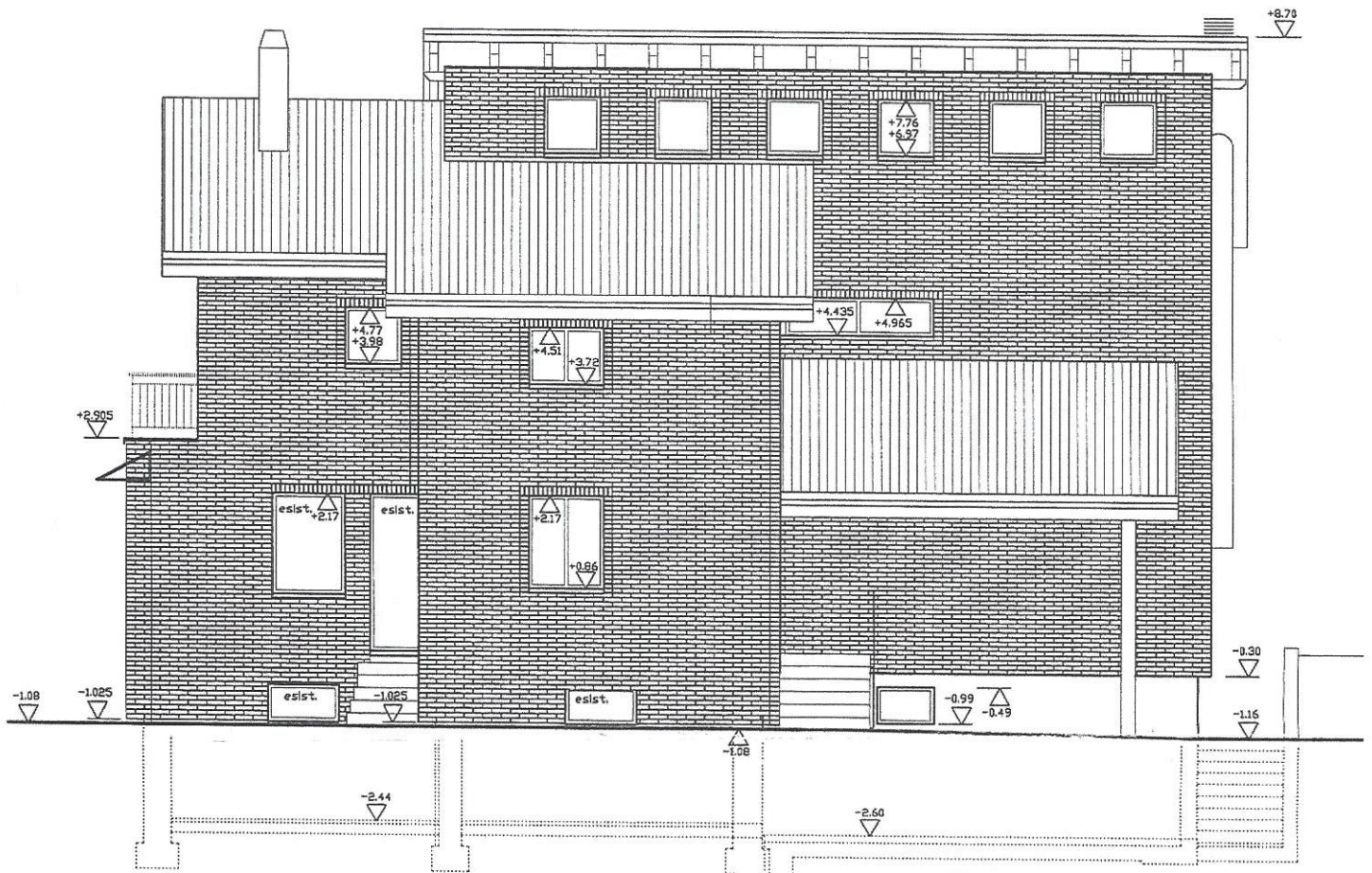


VISTA SUD-EST

LIARE di Caslano	001116 B5
errata n. 6987 Caslano	DATA: 21/05/01
Charly Steiner 06 53 70 / Fax 091-606 28 19	modif.
e NORD-IVEST	
	SCALA 1:50



VISTA SUD-OVEST

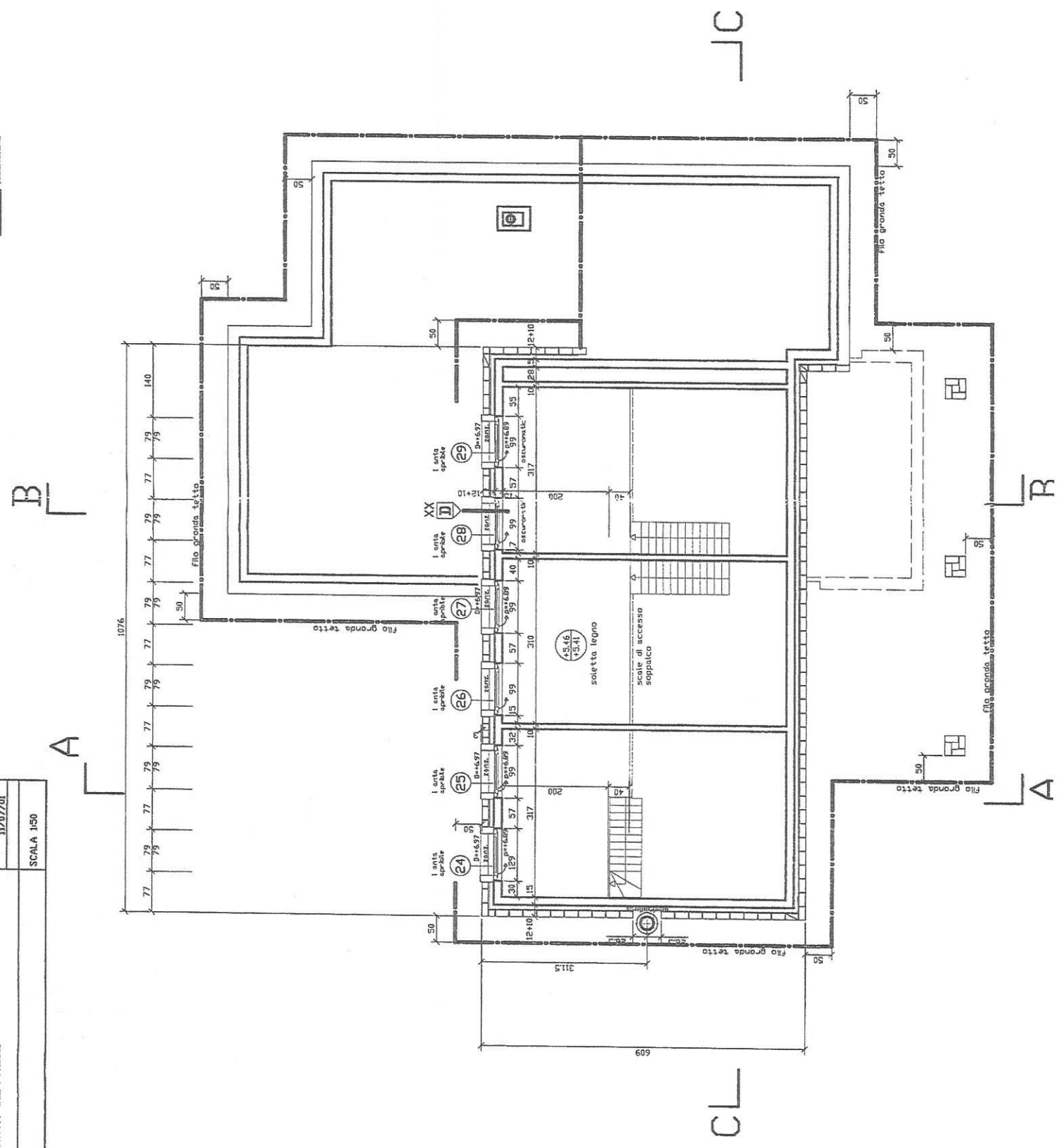


VISTA NORD-OVEST

1a APERTURA / noriglia

REMOZIONE
ISOLAZIONE

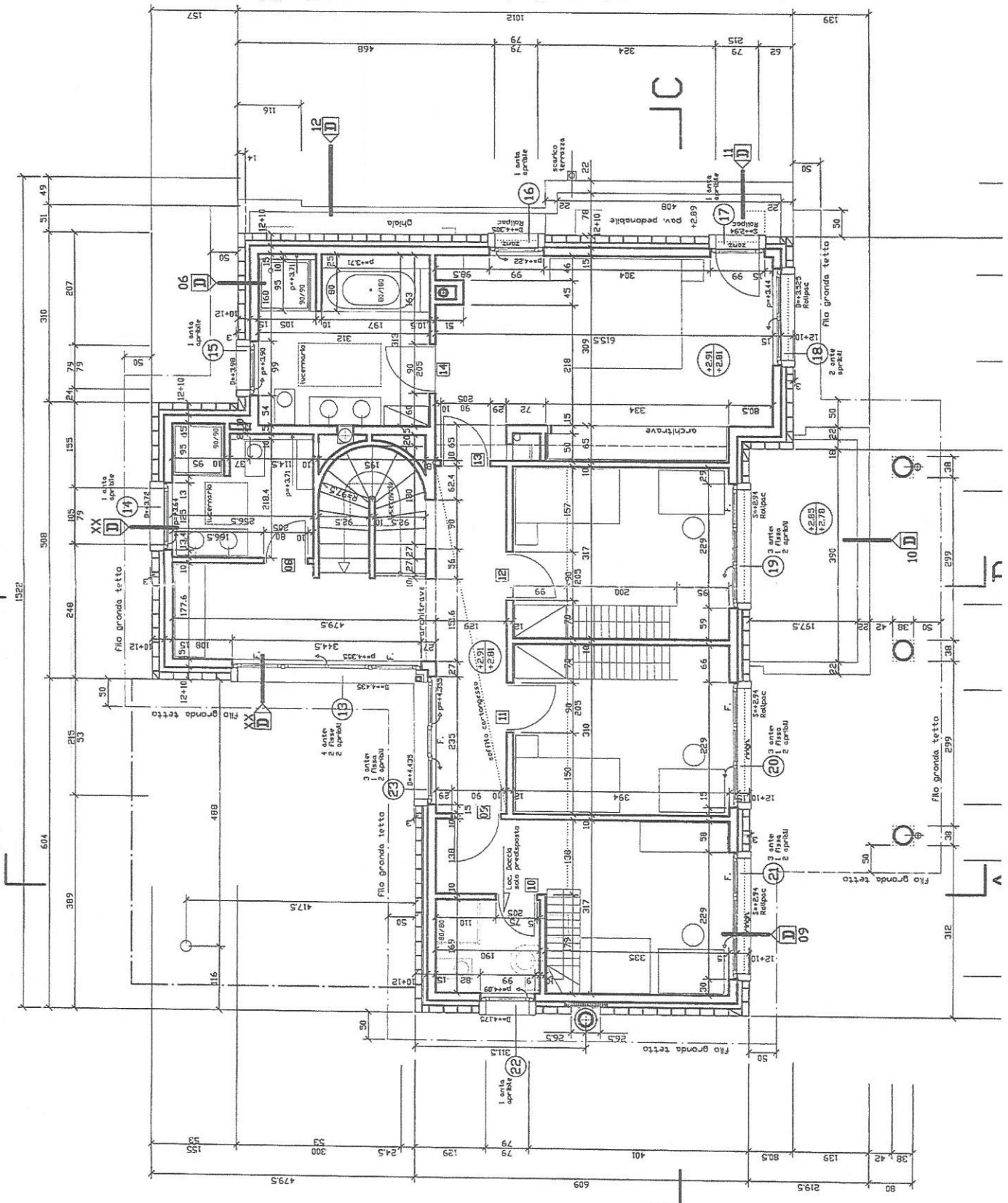
PROGETTO PER LA SOSTITUZIONE 6988 Firenze - tel 051-606 33 70 / fax 051-606 28 19	prof. 30/05/01 11/07/01	SCALA 1:50
PIANTA Soppalco		



Architettura S.T.S. REG. D.T.A. Charly Steiner
 6988 P. Tressa - tel. 091-606 53 70 / fax 091-606 28 19
 modif. 30/05/01
 11/07/01
 25/10/01
 SCALA 1:50

PIANTA 1.PIANO

la APERTURA / maniglia
 14 Nr. PORTE INTERNE
 DEMOLIZIONE
 ISOLAZIONE



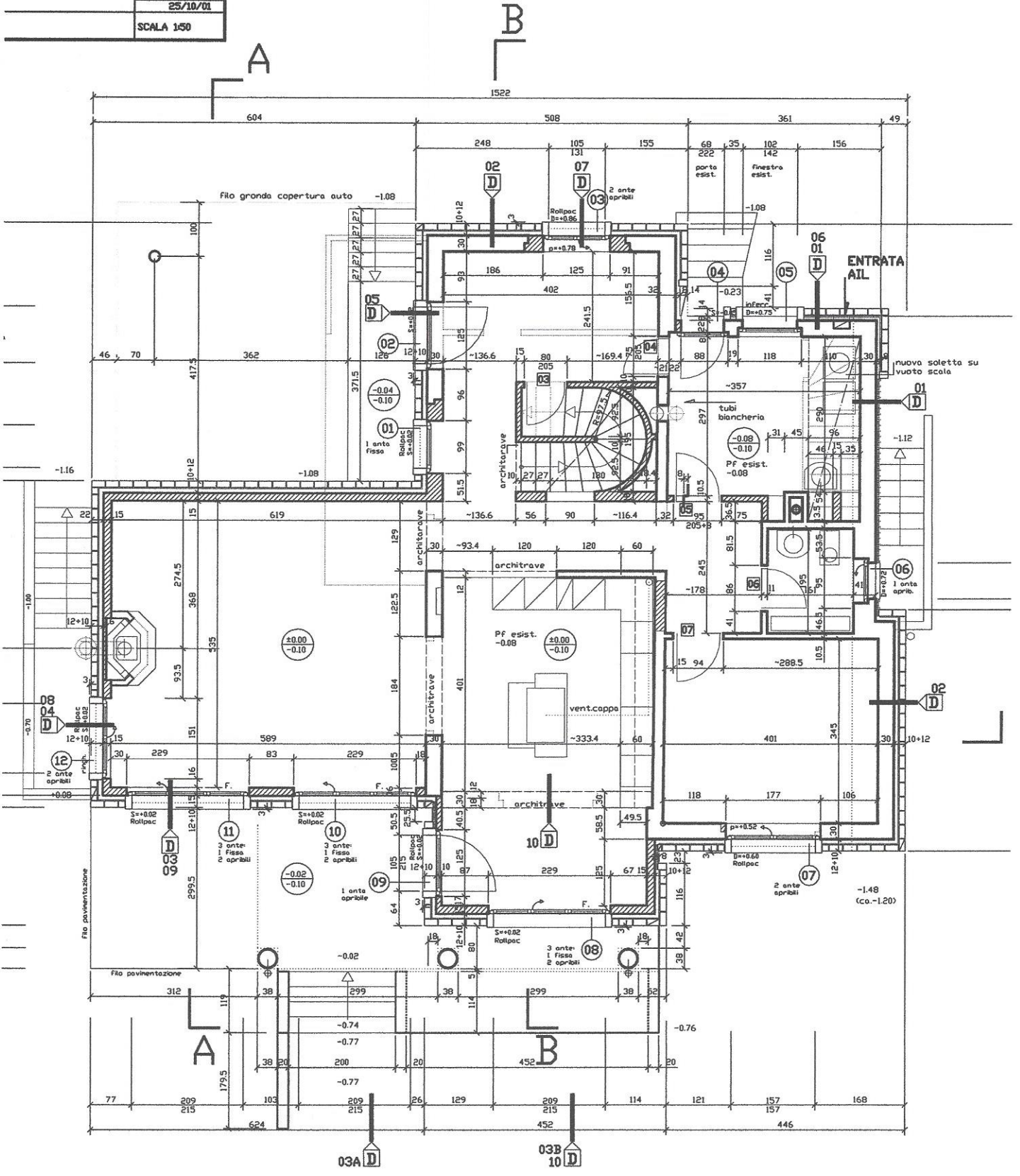
A
B

C

C

stano	0011.11
	B7
987 Casiano	DATA: 11/05/01
/ Steiner	modif. 30/05/01
70 / fax 091-606 28 19	11/07/01
	25/10/01
	SCALA 1:50

- 03 - Nr. FINESTRE
- 04 - Nr. DETTAGLIO
- ↗ 1a APERTURA / maniglia
- 14 - Nr. PORTE INTERNE
- MATTONI PARAMANO
- MATTONI COTTO
- CALCESTRUZZO
- PARETI ESISTENTI
- DEMOLIZIONE
- ISOLAZIONE



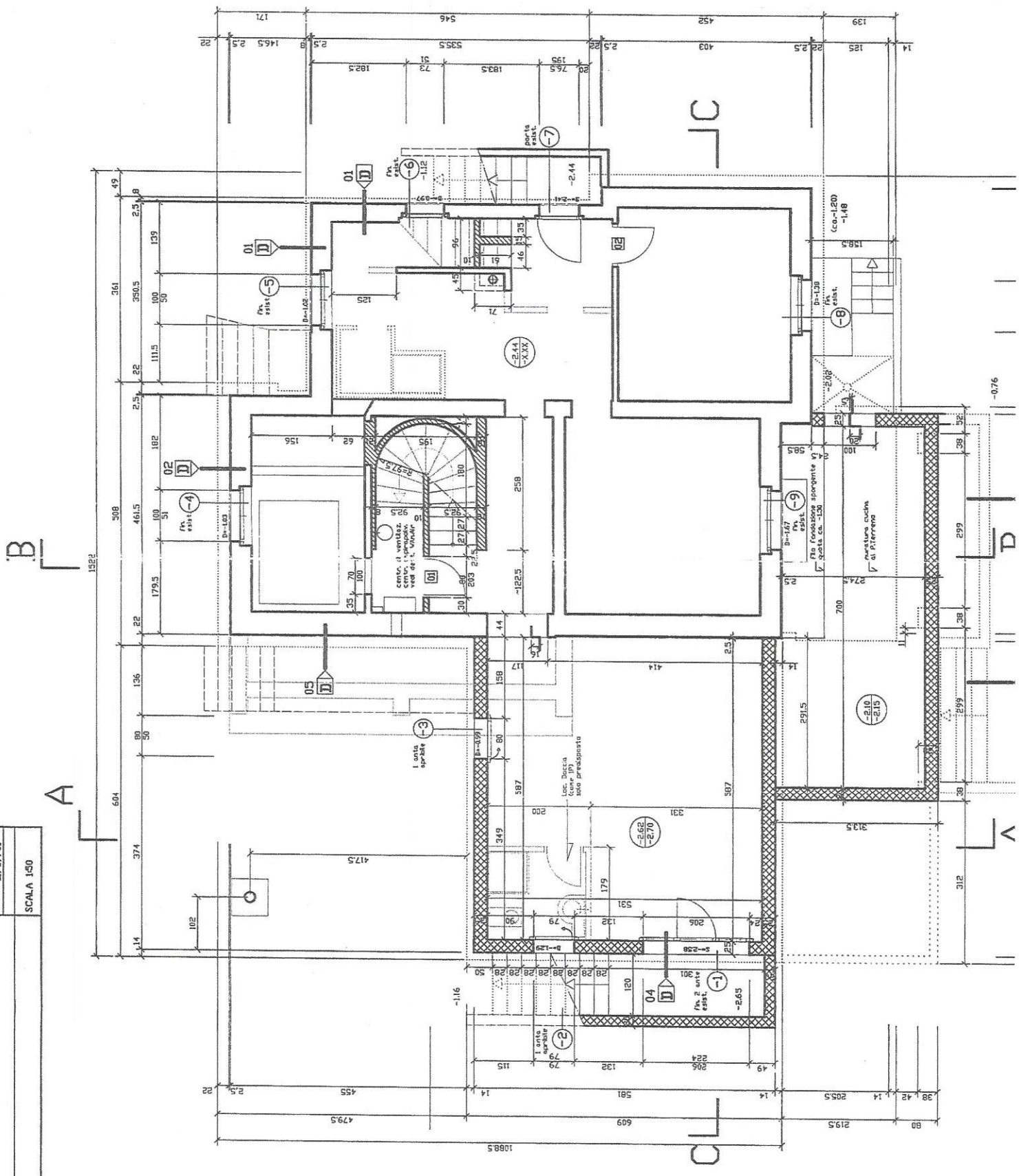
Architetto STS REG DTIA Charly Steiner
 6988 P.Tressa - tel 091-606 33 70 / Fax 091-606 28 19
 modif. 30/05/01
 11/07/01

PIANTA P. CANTINA

SCALA 1:50







1a APERTURA / noniglia
 01 N° PORTE INTERNE

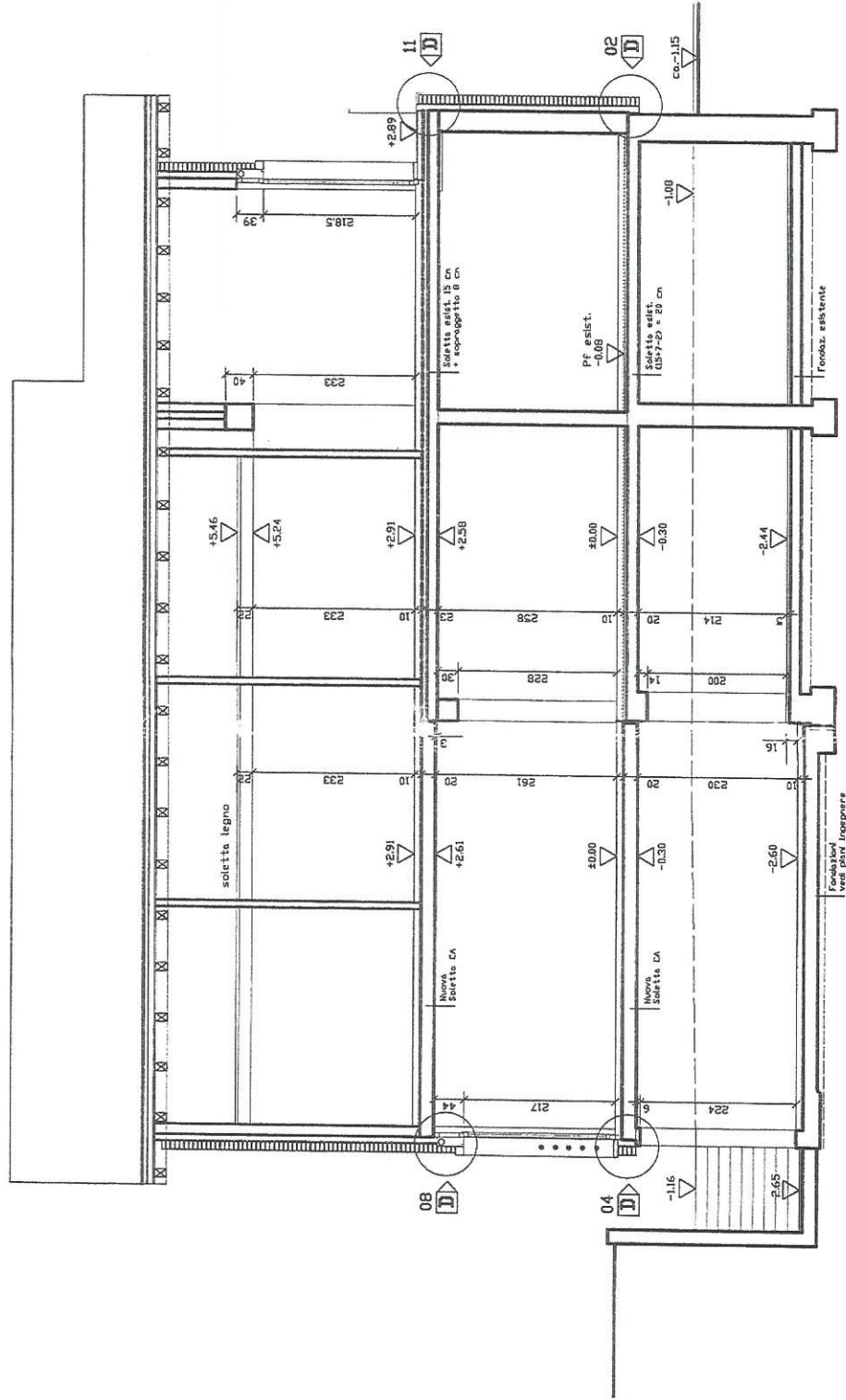
PARETI ESISTENTI
 DEMOLIZIONE
 ISOLAZIONE



Architectural drawing details and notes at the bottom of the page, including a scale of 1:50 and a title 'PIANTA P. CANTINA'.

ABITAZIONE UNIFAMILIARE	
MAPP. 703 Comune di Castano	
Proprietà Sig.ri Paolo Guerra e Sabine Christopher Guerra - 6987 Castano	001115 BS DATA 11/05/01
Architetto STS REG OTIA Cheryl Stehler 6988 P.Trusa - tel 091-606 53 70 / Fax 091-606 28 19	modif. 21/05/01 30/05/01
SEZIONI C-C	
SCALA 1:50	

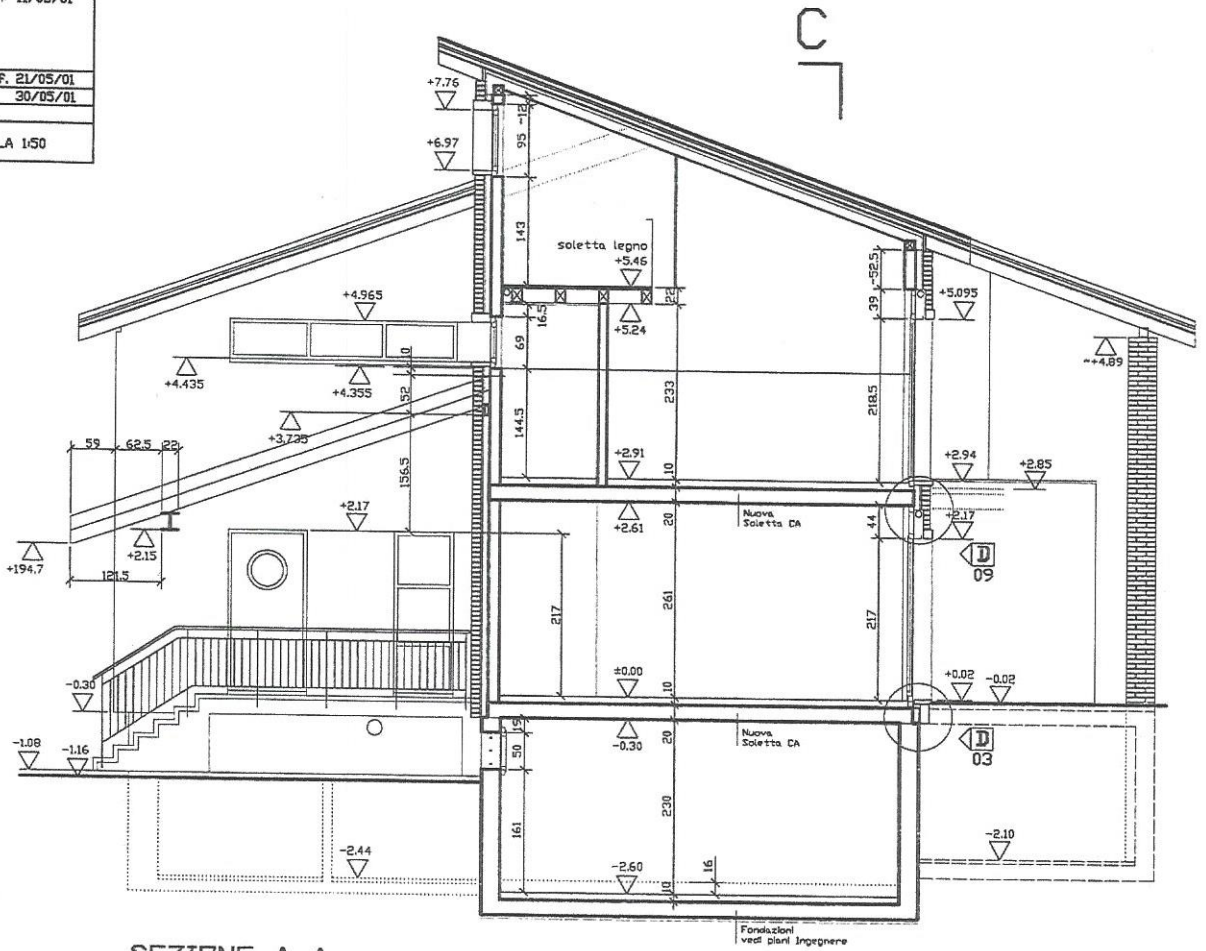
-  PARAMANO
-  COTTO
-  CALCESTRUZZO
-  PARETI ESISTENTI
-  ISOLAZIONE
-  N. BETTAGLIO



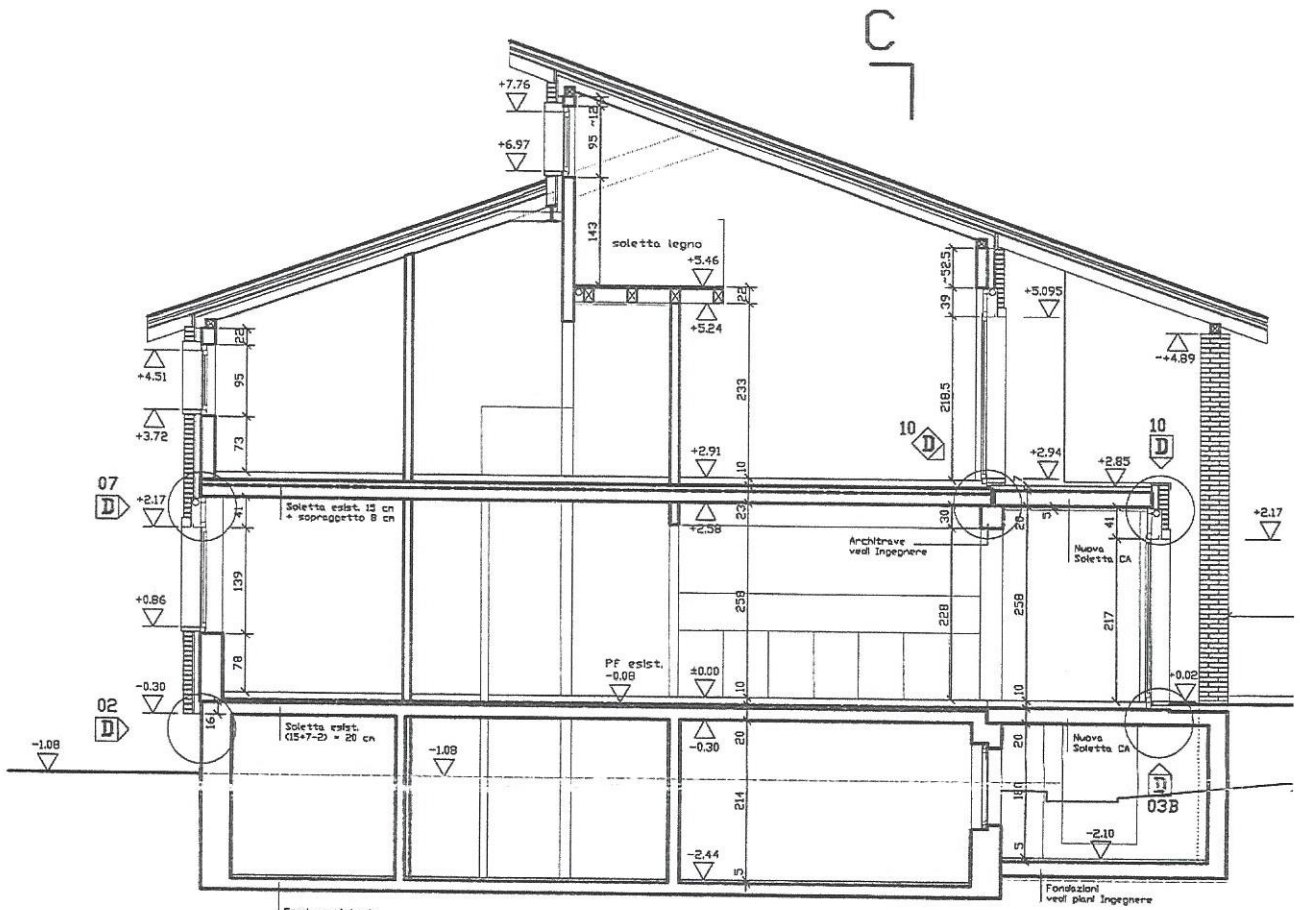
SEZIONE C-C

FAMILIARE re di Caslano	001114 B5
o Guerra e uerra - 6987 Caslano	DATA: 11/05/01
ITIA Charly Steiner 91-606 53 70 / Fax 091-606 28 19	
B-B	modif. 21/05/01 30/05/01
	SCALA 1:50

HAND
D
J
ENTI



SEZIONE A-A



SEZIONE B-B

SEZIONE

confine

-0.70

±0.00

-0.80

-0.76

PISCINA

-0.74

-0.74

-0.02

portico

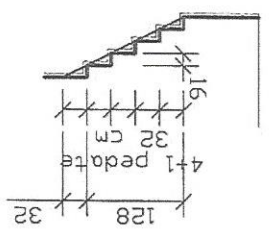
-0.02

-0.80

-2.65

-1.10

SCALA e RAMPA
in
travertino
grezzo=5 cm



cancello
veicolare
(recupero esistente)

-1.16

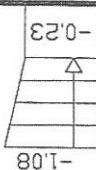
-1.16

posteggi
coperti

-1.08

-0.04

Attenzione
P. Pluviale
lasciare risparmio in
fondazione



SAGOMATI rossi esistenti

cancello
pedonale
(recupero esistente)

-1.08

234

nuovo muro
cinta in CA

strada comunale

tubo ac. potabile

64

100

38

141

acqua

80

90

90

90

90

90

90

90

90

90

90

90

90

90

90

90

90

90

90

90

90

90

90

90

90

90

90

90

90

90

90

90

90

90

90

90

90

90

90

90

90

90

90

90

90

90

90

90

90

90

90

90

90

90

90

90

90

90

90

90

90

90

90

90

90

90

90

90

90

90

90

90

90

90

90

90

90

90

90

90

90

90

90

90

90

90

90

90

90

90

90

90

90

90

90

90

90

90

90

90

90

90

90

90

90

90

90

90

90

90

90

90

90

90

90

90

90

90

90

90

90

90

90

90

90

90

90

90

90

90

90

90

90

90

90

90

90

90

90

90

90

90

90

90

90

90

90

90

90

90

90

90

90

90

90

90

90

90

90

90

90

90

90

90

90

90

90

90

90

90

90

90

90

90

90

90

90

90

90

90

90

90

90

90

90

90

90

90

90

90

90

90

90

90

90

90

90

90

90

90

90

90

90

90

90

90

90

90

90

90

90

90

90

90

90

90

90

90

90

90

90

90

90

90

90

90

90

90

90

90

90

90

90

90

90

90

90

90

90

90

90

90

90

90

90

90

90

90

90

90

90

90

90

90

90

90

90

90

90

90

90

90

90

90

90

90

90

90

90

90

90

90

90

90

90

90

90

90

90

90

90

90

90

90

90

90

90