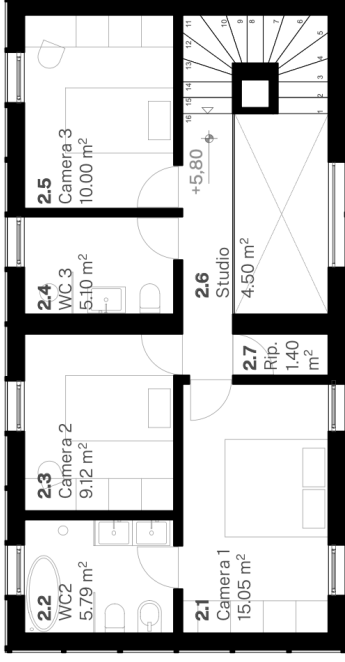


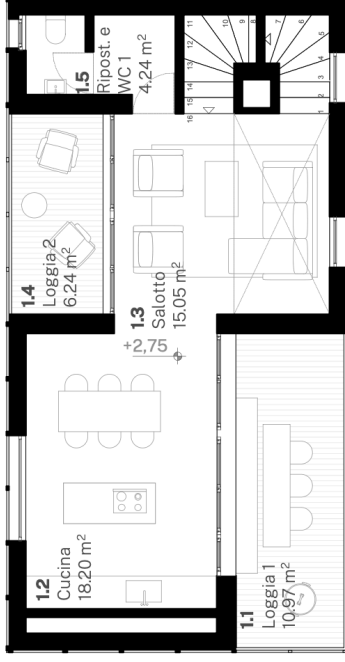
### Piano secondo - 1.100



- 2.1 Camera 1 15,05m<sup>2</sup>
- 2.2 WC 2 5,79m<sup>2</sup>
- 2.3 Camera 2 9,12m<sup>2</sup>
- 2.4 WC 3 5,10m<sup>2</sup>
- 2.5 Camera 3 10,00m<sup>2</sup>
- 2.6 Studio / doppia altezza 4,50m<sup>2</sup>+ 6,50m<sup>2</sup>
- 2.7 Ripostiglio 1,40m<sup>2</sup>

totale calpestabile : 57,46m<sup>2</sup>  
**totale commerciale: 76,23m<sup>2</sup>**

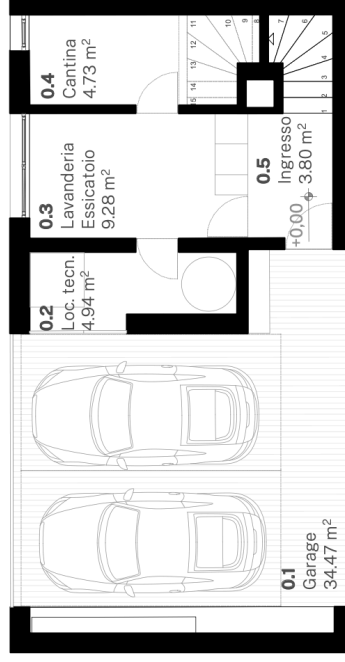
### Piano primo - 1.100



- 1.1 Loggia 01 10,97m<sup>2</sup>
- 1.2 Cucina 18,20m<sup>2</sup>
- 1.3 Salotto 15,05m<sup>2</sup>
- 1.4 Loggia 02 6,24m<sup>2</sup>
- 1.5 Ripostiglio e WC 1 4,24m<sup>2</sup>

totale calpestabile : 55,15m<sup>2</sup>  
**totale commerciale: 76,23m<sup>2</sup>**

### Piano terra - 1.100



- 0.1 Garage 34,47m<sup>2</sup>
- 0.2 Locale tecnico 4,94m<sup>2</sup>
- 0.3 Lavanderia 9,28m<sup>2</sup>
- 0.4 Cantina 4,73m<sup>2</sup>
- 0.5 ingresso 3,80m<sup>2</sup>

totale calpestabile : 57,22m<sup>2</sup>  
**totale commerciale: 76,23m<sup>2</sup>**

**Totale commerciale: 228,69m<sup>2</sup>**