

4 1/2 - ZIMMER - WOHNUNG
LYSSSTRASSE 16A
3293 DOTZIGEN BE

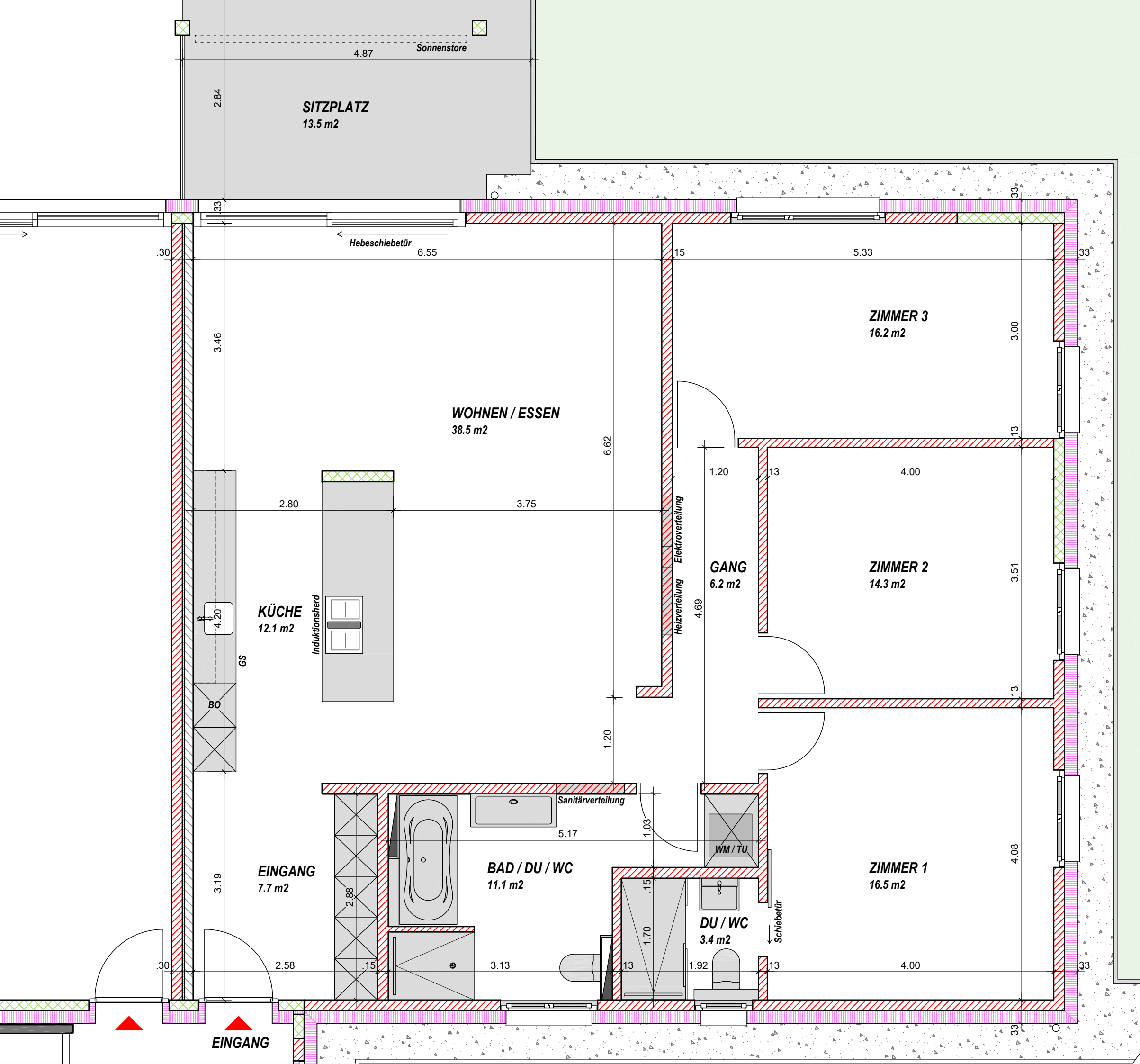
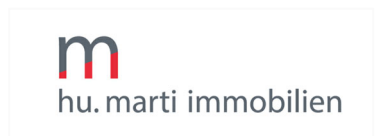
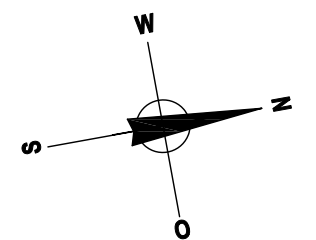
ERDGESCHOSS MST. 1:50
REPRO: 25.02.2026

RAUMPROGRAMM

- EINGANG	7.7 M2
- KÜCHE	12.1 M2
- WOHNEN / ESSEN	38.5 M2
- BAD / DU / WC	11.1 M2
- GANG	6.2 M2
- ZIMMER 1	16.5 M2
- DU / WC	3.4 M2
- ZIMMER 2	14.3 M2
- ZIMMER 3	16.2 M2
- TOTAL	126.0 M2
- SITZPLATZ	13.5 M2

LEGENDE:

	BETON
	KALKSANDSTEIN
	BACKSTEIN
	WÄRMEDÄMMUNG
	FERTIGELEMEN





Untergeschoss 1:200

Lysstrasse 16a