



 HILFIKON

The logo icon consists of a 2x2 grid of small squares, with the top-left square missing.

SEVEN



Architektur Atelier Gasper Krasnjqi
Master of Arts in Architecture
Lehrstrasse 7
6023 Rotenburg

mob +41 (0) 79 415 98 54
mail a2gk@bluwin.ch

Überbauung Hausackerstrasse, 5613 Hiltikon

FIBO-IMMO GmbH, Haagwiesenstrasse 1b, 8155 Niederhasli

Situationsplan

STUDIE :
BAUHERRSCHAFT :
PLAN :

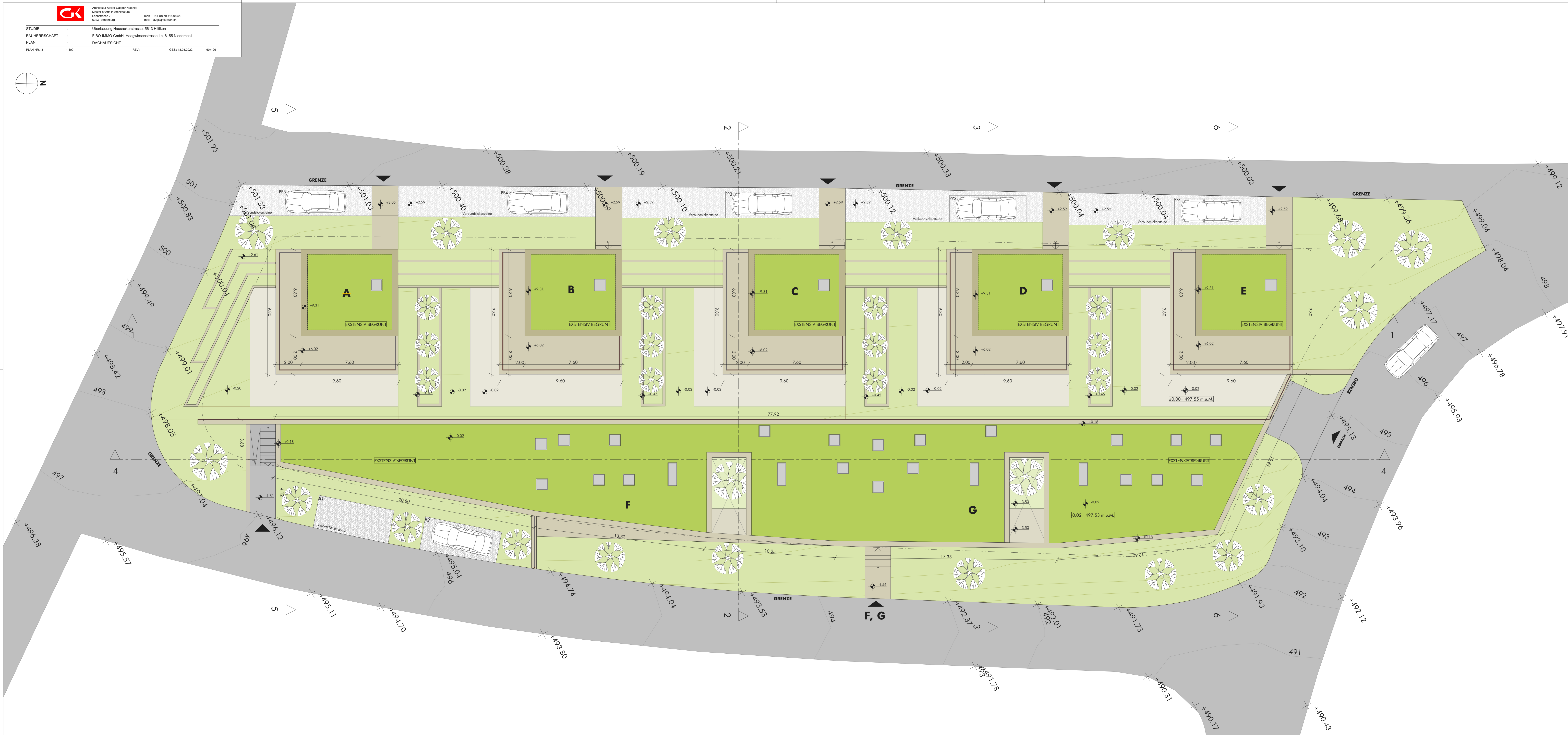
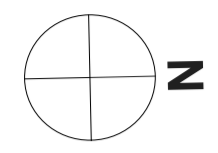
1:500

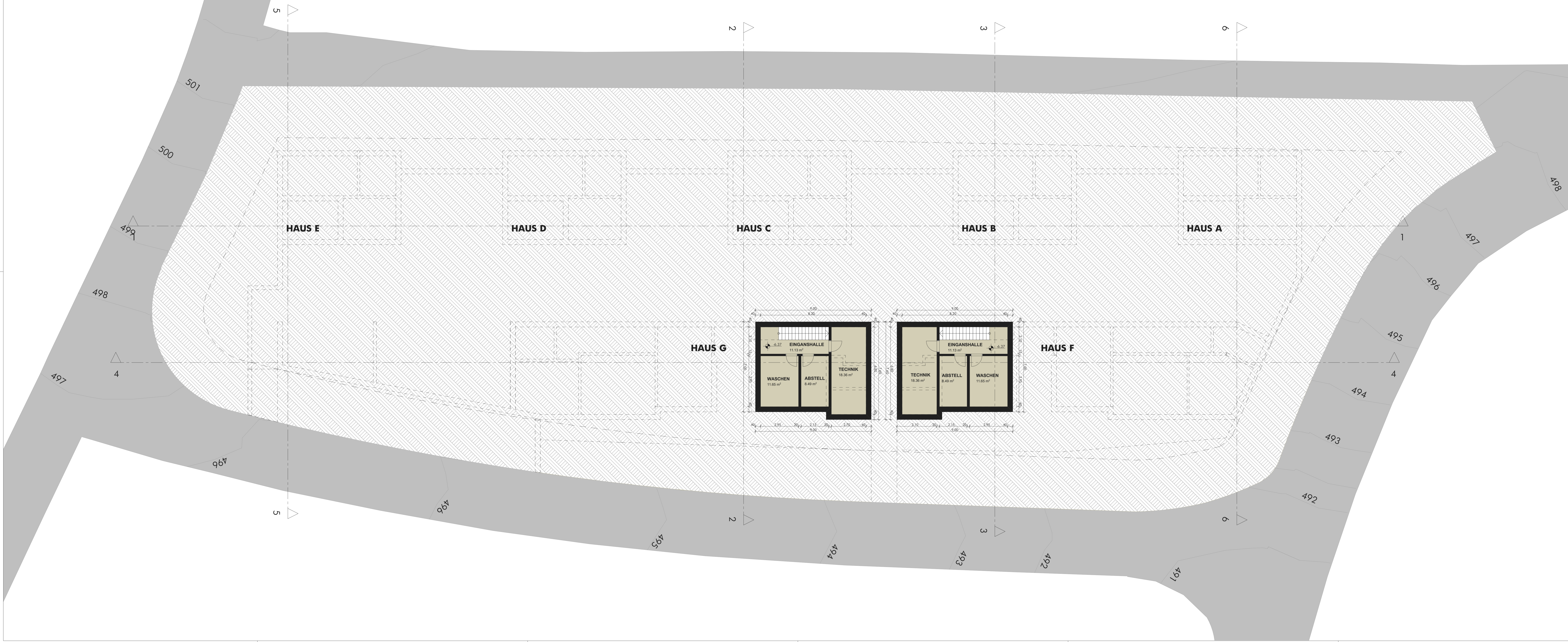
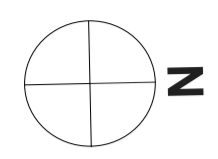
REV.:

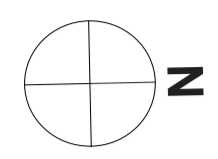
GEZ.: 18.03.2022.

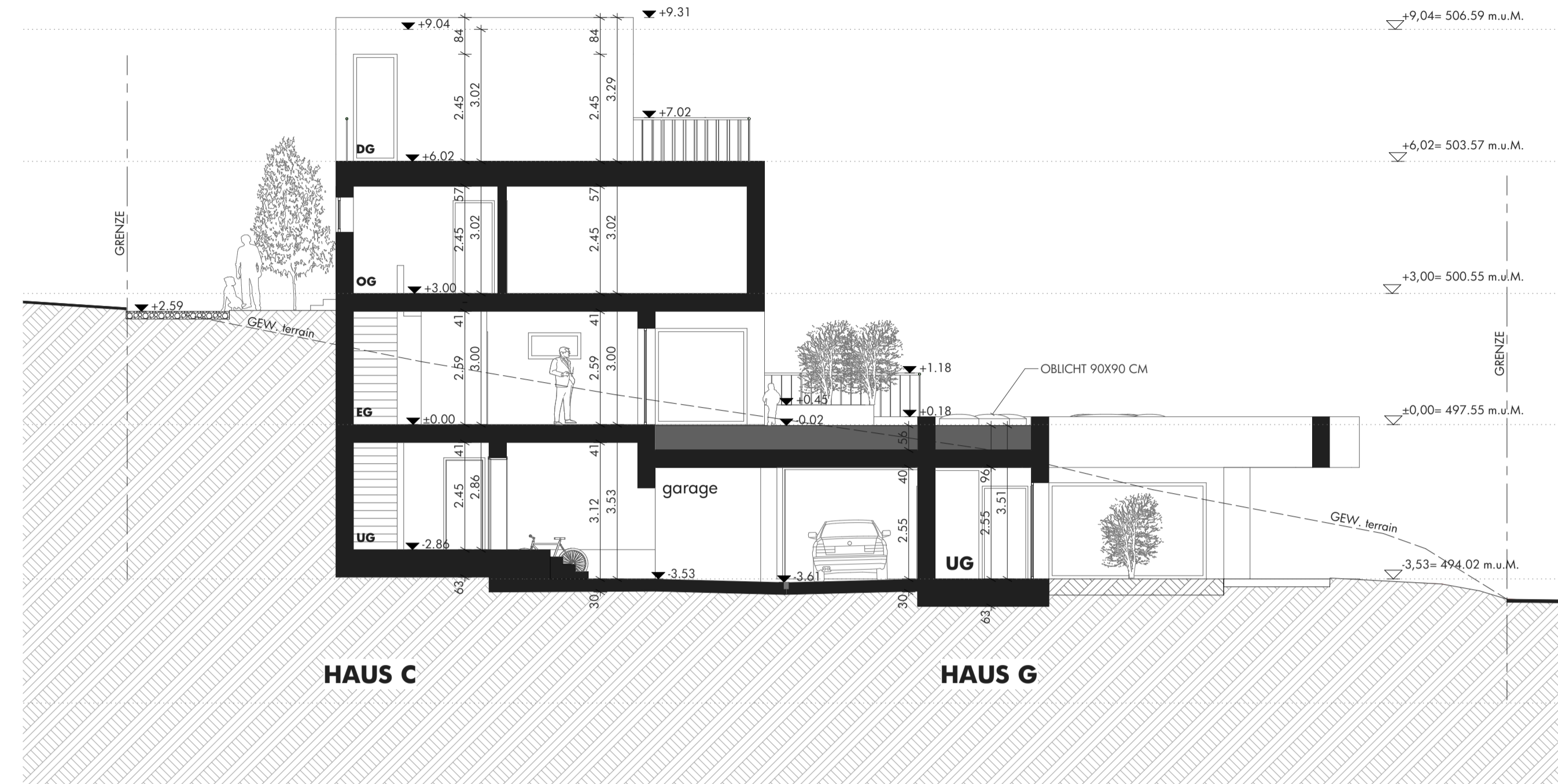
A3



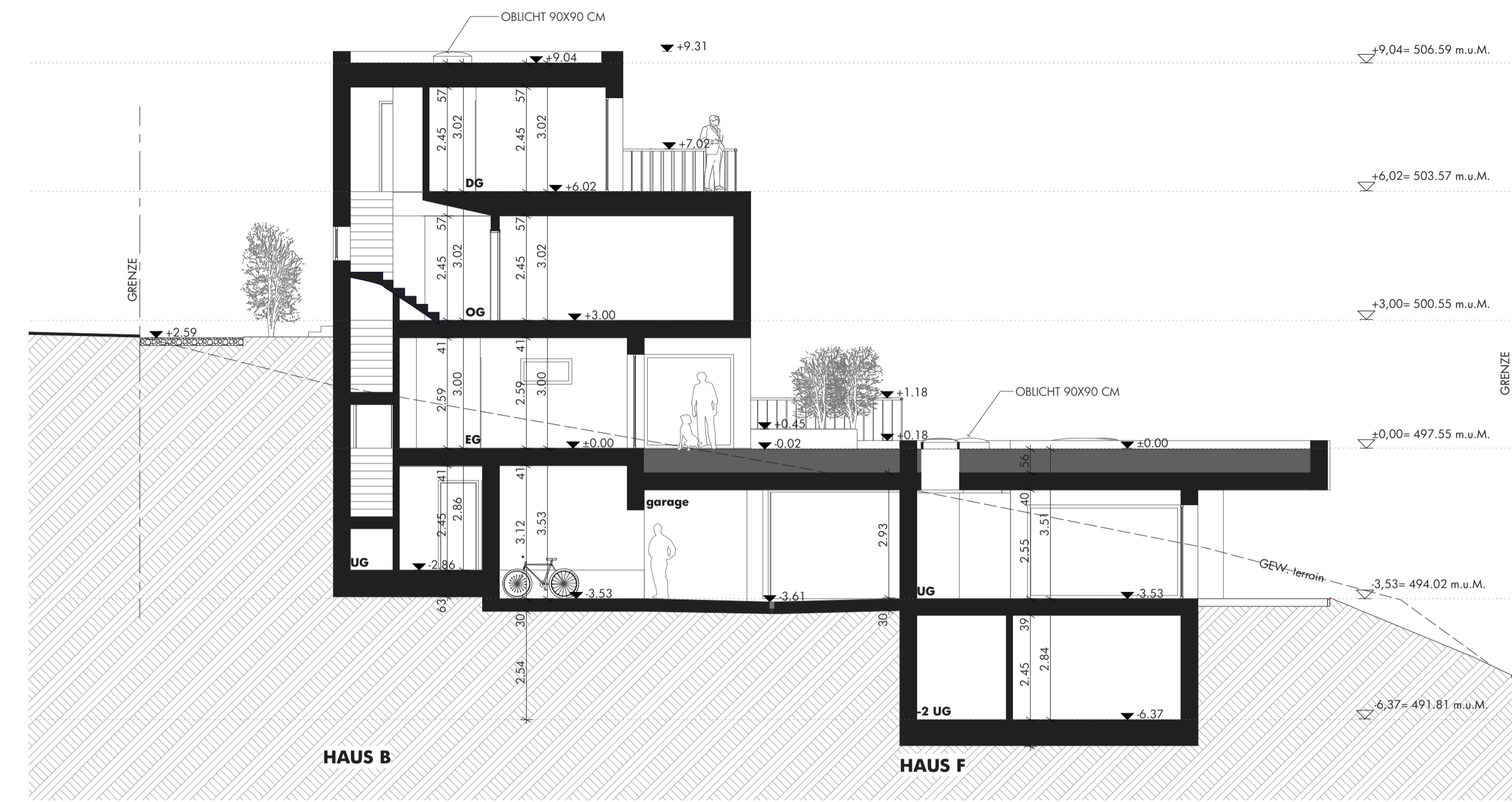




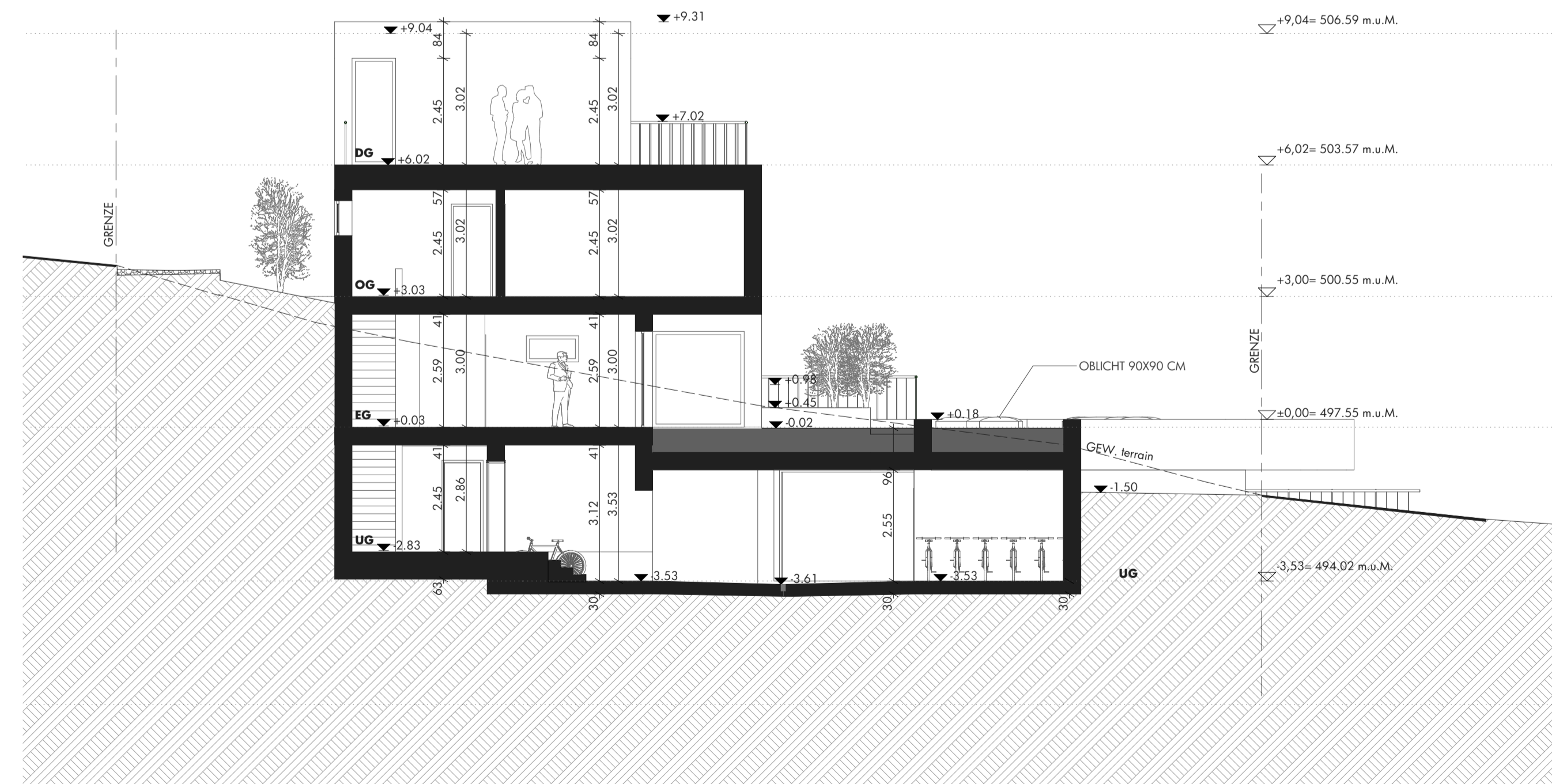




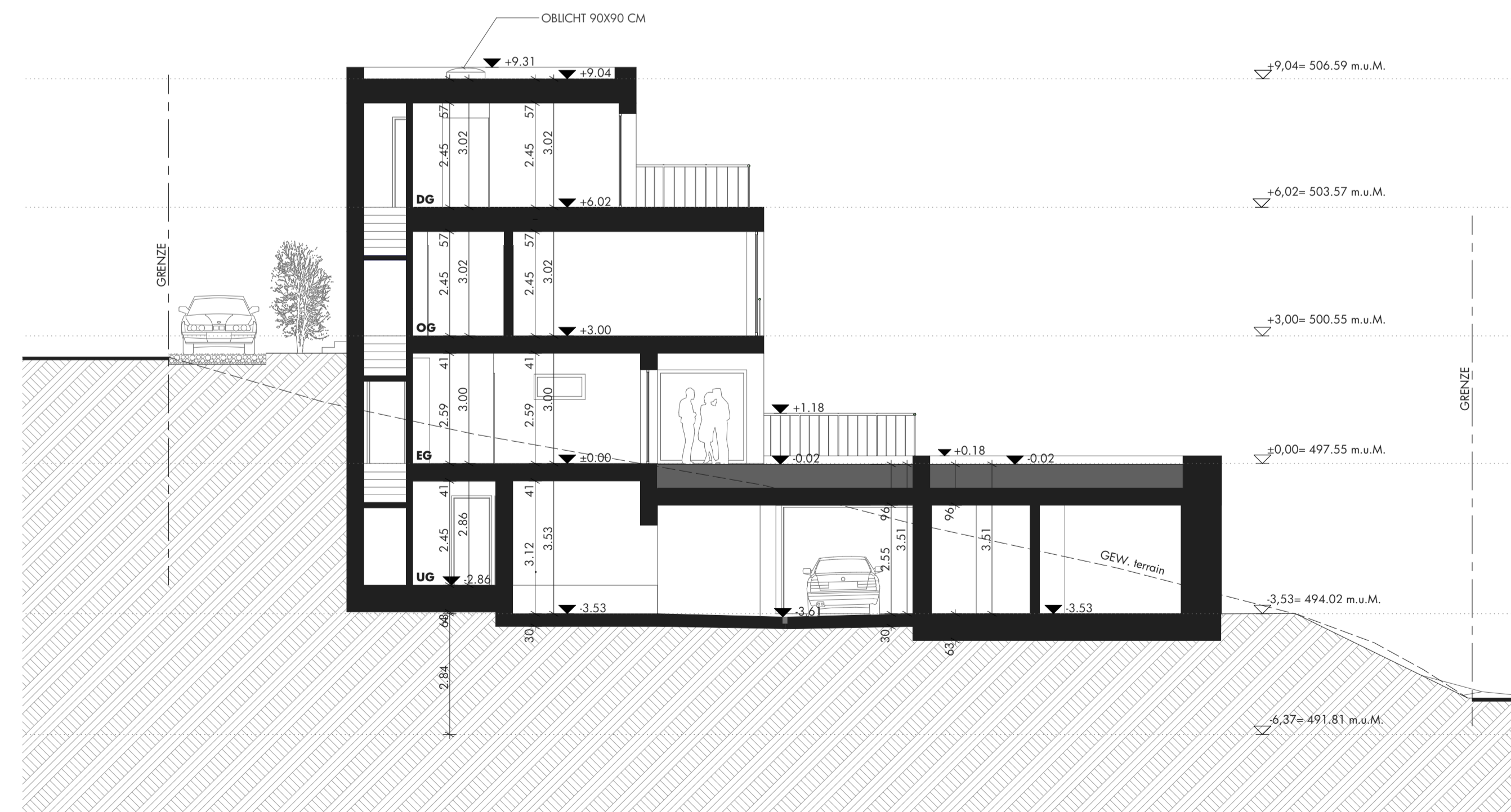
2-2



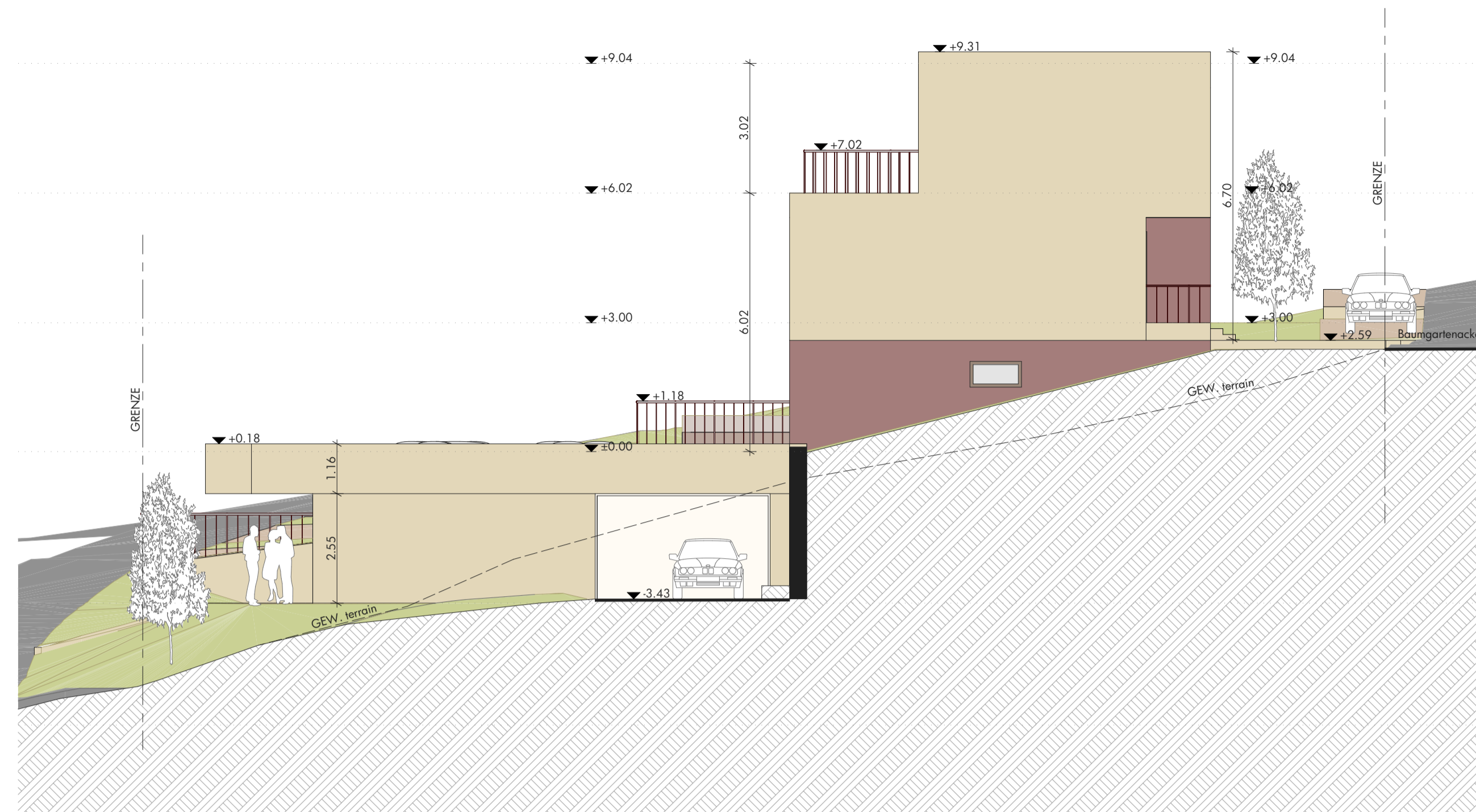
3-3



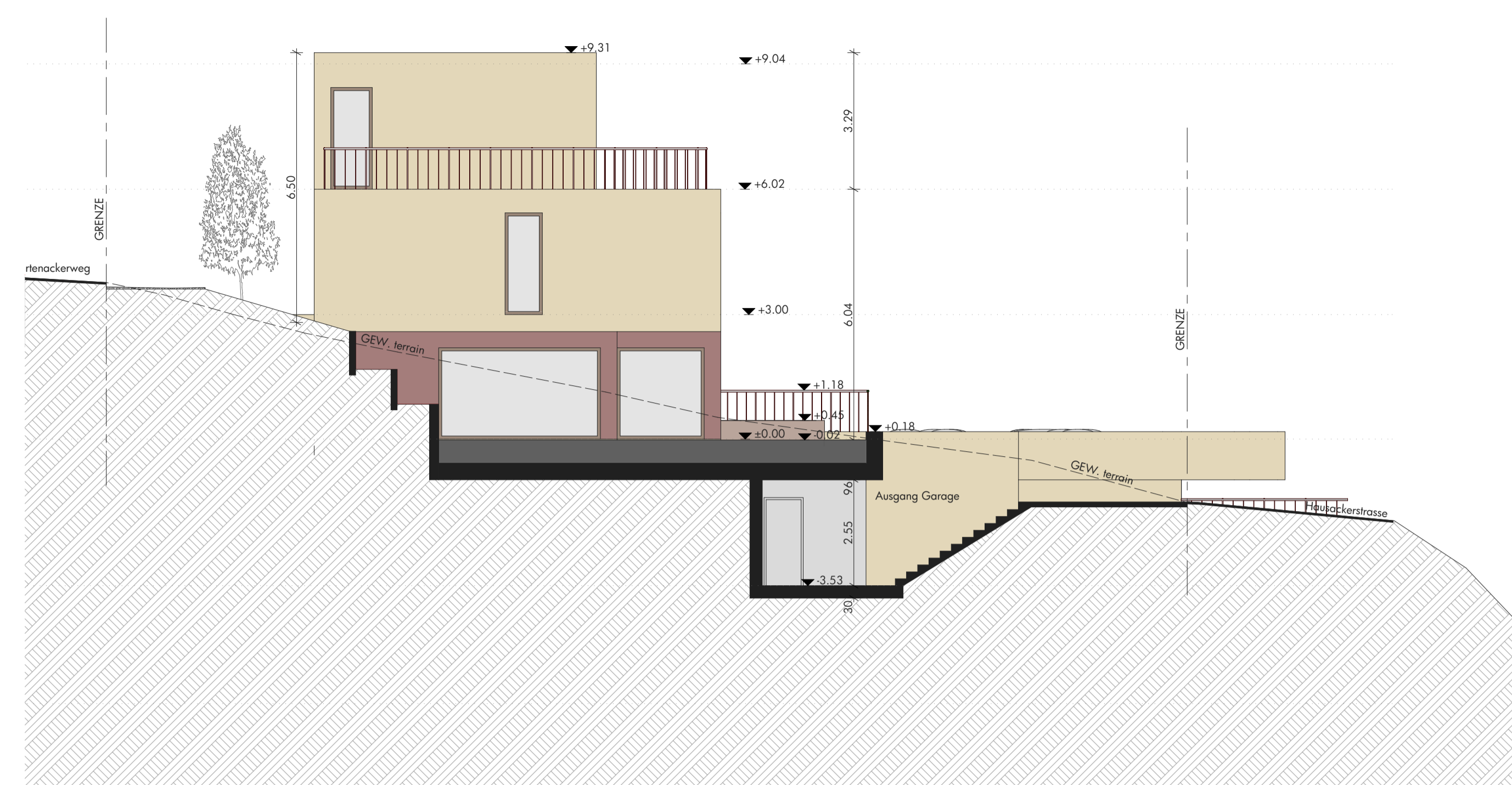
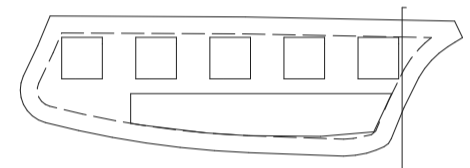
5-5



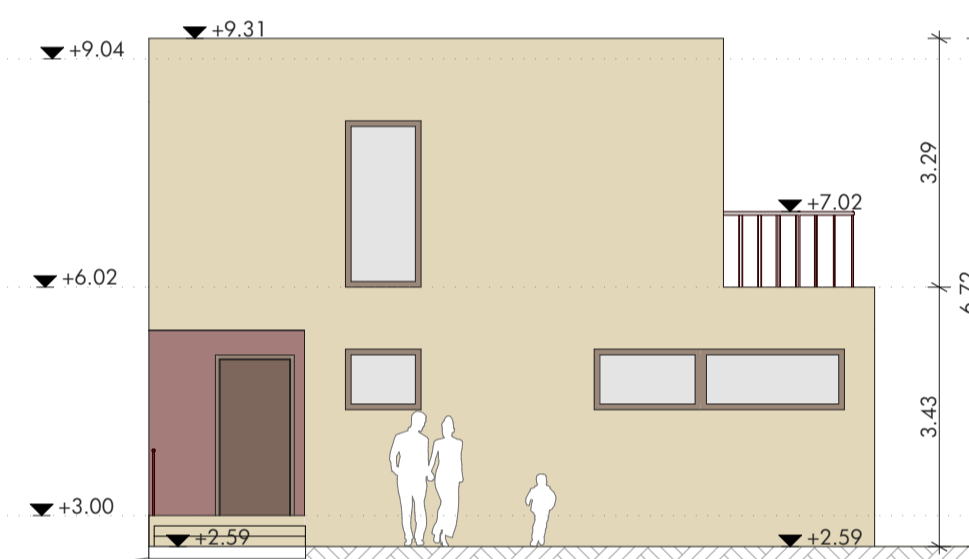
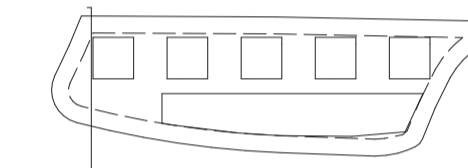
6-6



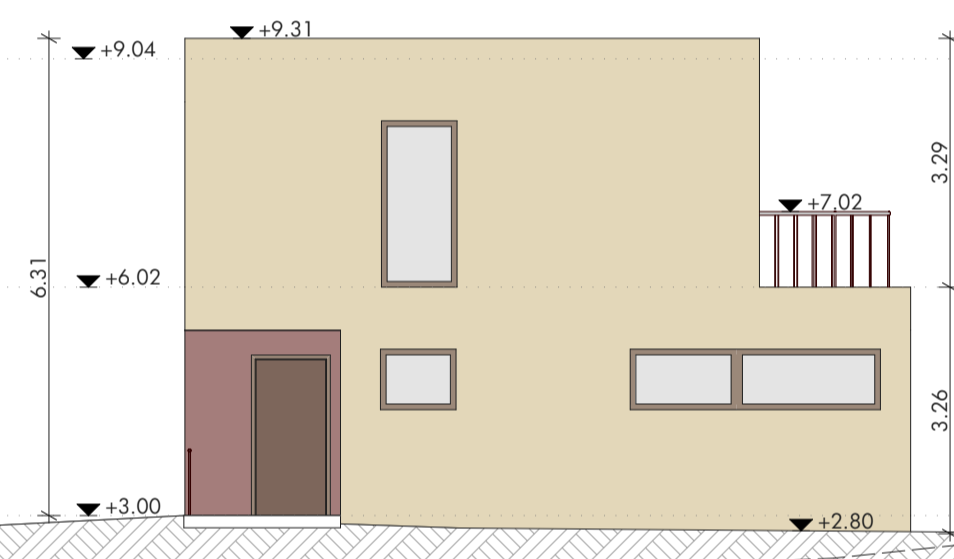
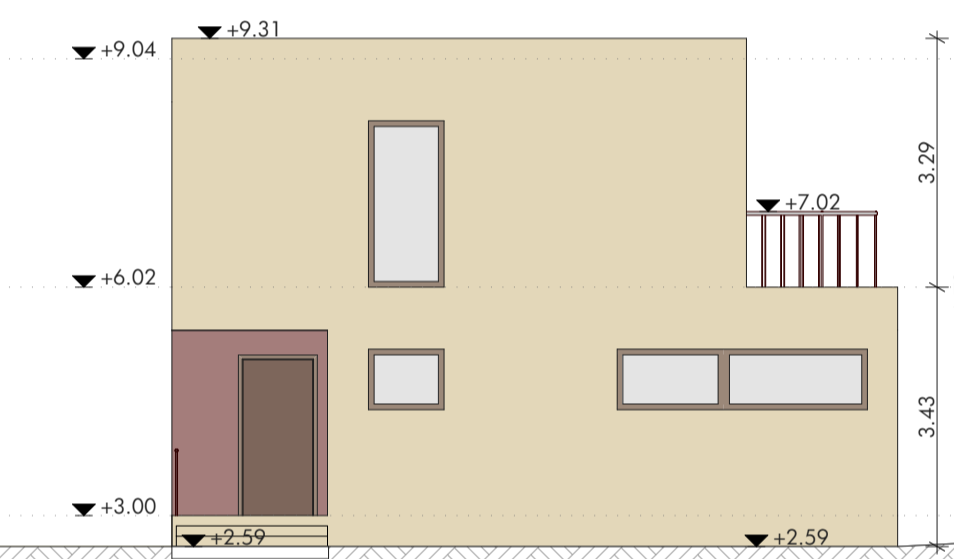
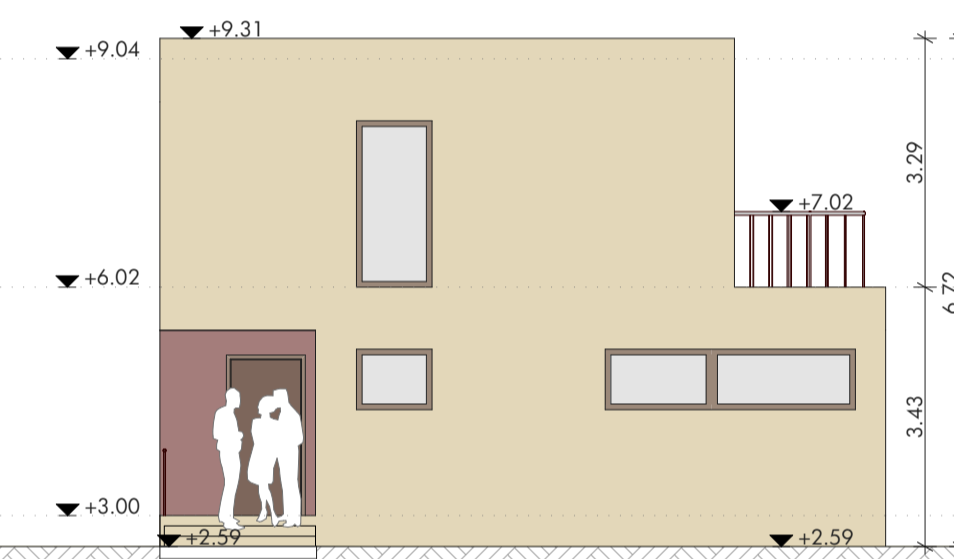
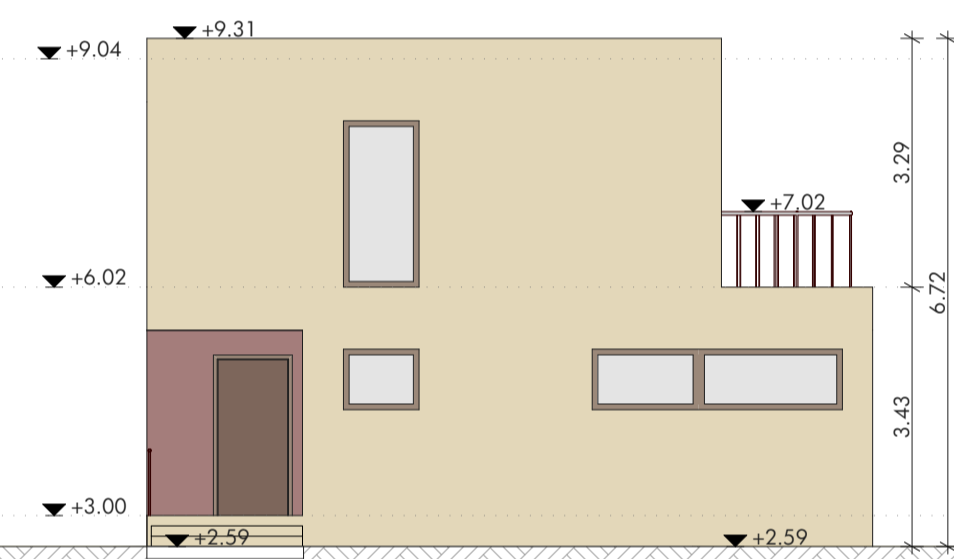
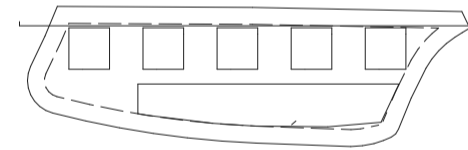
ANSICHT NORDEN



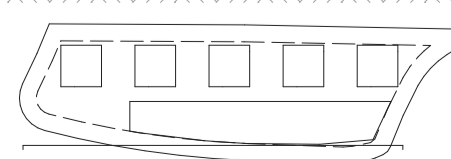
ANSICHT SÜDEN



ANSICHT WESTEN



ANSICHT OSTEN



Beratung und Verkauf:

DK Homes & Investments
Domenico Suverato
Rathausstrasse 14
6340 Baar

+41 41 511 45 41

+41 76 406 46 86

info@dk-homes.ch

www.dk-homes.ch



H O M E S
— INVESTMENTS —

