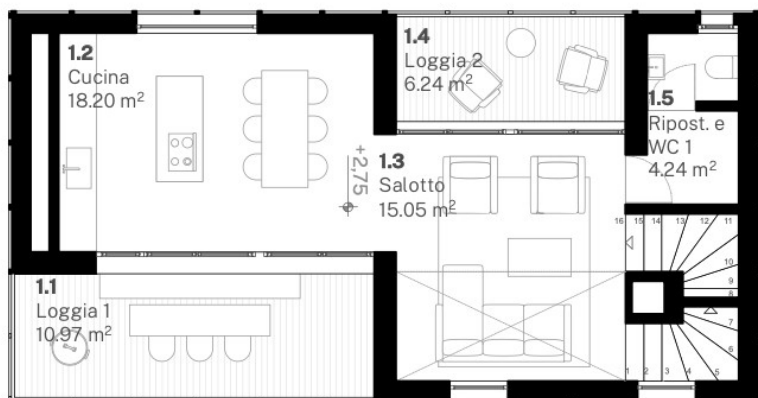


**Piano secondo - 1.100**

2.1	Camera 1	15,05m <sup>2</sup>
2.2	WC 2	5,79m <sup>2</sup>
2.3	Camera 2	9,12m <sup>2</sup>
2.4	WC 3	5,10m <sup>2</sup>
2.5	Camera 3	10,00m <sup>2</sup>
2.6	Studio / doppia altezza	4,50m <sup>2</sup> + 6,50m <sup>2</sup>
2.7	Ripostiglio	1,40m <sup>2</sup>

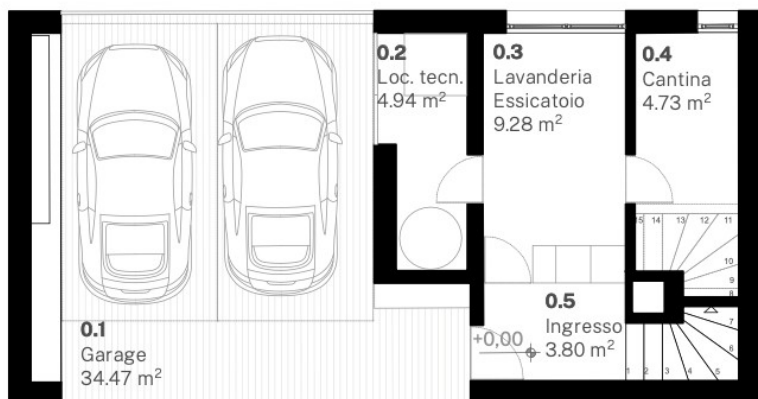
totale calpestabile : 57,46m<sup>2</sup>  
**totale commerciale: 76,23m<sup>2</sup>**



**Piano primo - 1.100**

1.1	Loggia 01	10,97m <sup>2</sup>
1.2	Cucina	18,20m <sup>2</sup>
1.3	Salotto	15,05m <sup>2</sup>
1.4	Loggia 02	6,24m <sup>2</sup>
1.5	Ripostiglio e WC 1	4,24m <sup>2</sup>

totale calpestabile : 55,15m<sup>2</sup>  
**totale commerciale: 76,23m<sup>2</sup>**



**Piano terra - 1.100**

0.1	Garage	34,47m <sup>2</sup>
0.2	Locale tecnico	4,94m <sup>2</sup>
0.3	Lavanderia	9,28m <sup>2</sup>
0.4	Cantina	4,73m <sup>2</sup>
0.5	ingresso	3,80m <sup>2</sup>

totale calpestabile : 57,22m<sup>2</sup>  
**totale commerciale: 76,23m<sup>2</sup>**

**Totale commerciale:**

**228,69m<sup>2</sup>**